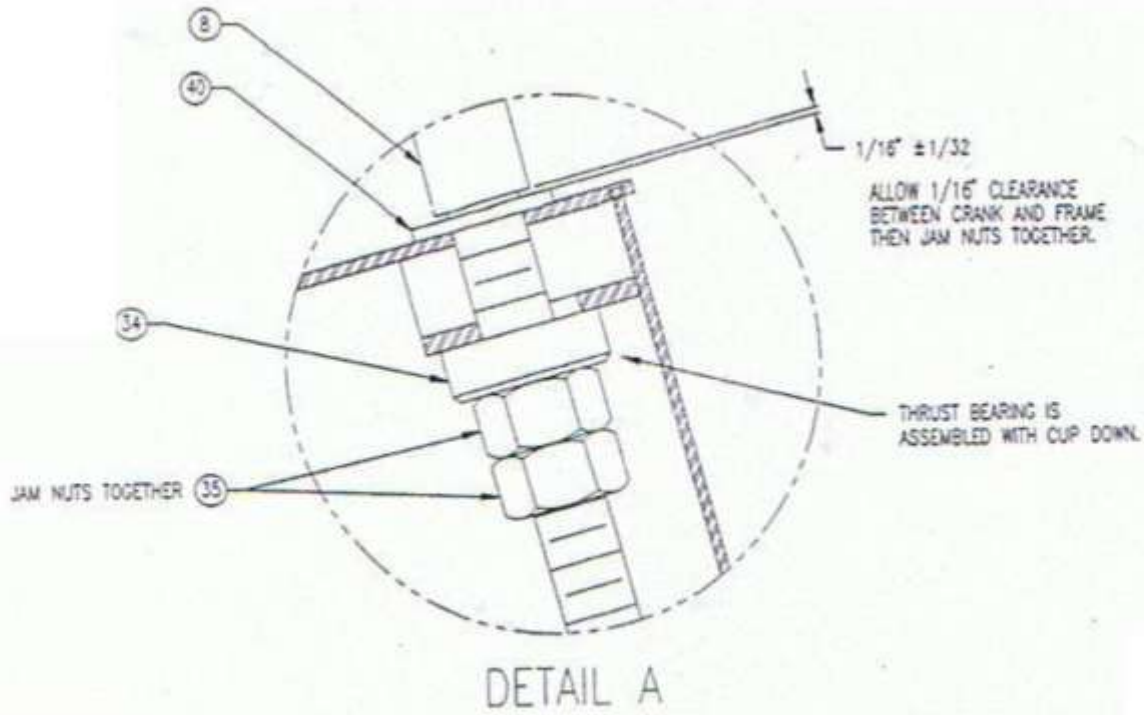
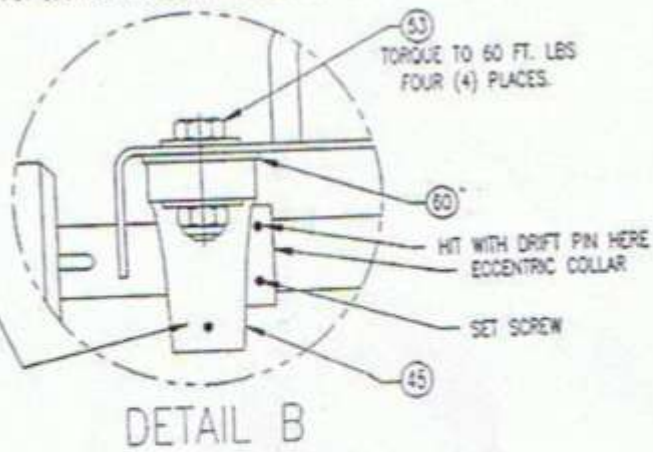


- 20M LEVEL ADJUSTMENT:  
PLACE 20M ON FLAT SURFACE.  
IF SAW ROCK, ADJUST AS FOLLOWS:
- 1) LOCKER JAW NUT.
  - 2) TURN SET SCREW COUNTERW. TO SQUARE SAW ROCK ON BOTH FRONT AND LEFT REAR WELLS.
  - 3) TURN SET SCREW COUNTER COUNTERW. TO SQUARE SAW ROCK ON LEFT FRONT AND RIGHT REAR WELLS.
  - 4) HOLDING SET SCREW, TIGHTEN JAW NUT.





ASSEMBLE BEARING WITH GREASE FITTING FACING TOWARD THE FRONT OF THE SAW.  
 HOLD ARBOR STEADY (WITH PIPE WRENCH) & HAMMER HIT WITH DRIFT PIN  
 ECCENTRIC COLLAR CLOCKWISE AS FACING PULLEY END  
 OF ARBOR. PUT LOCTITE ON ECCENTRIC COLLAR SET SCREW AND TIGHTEN.



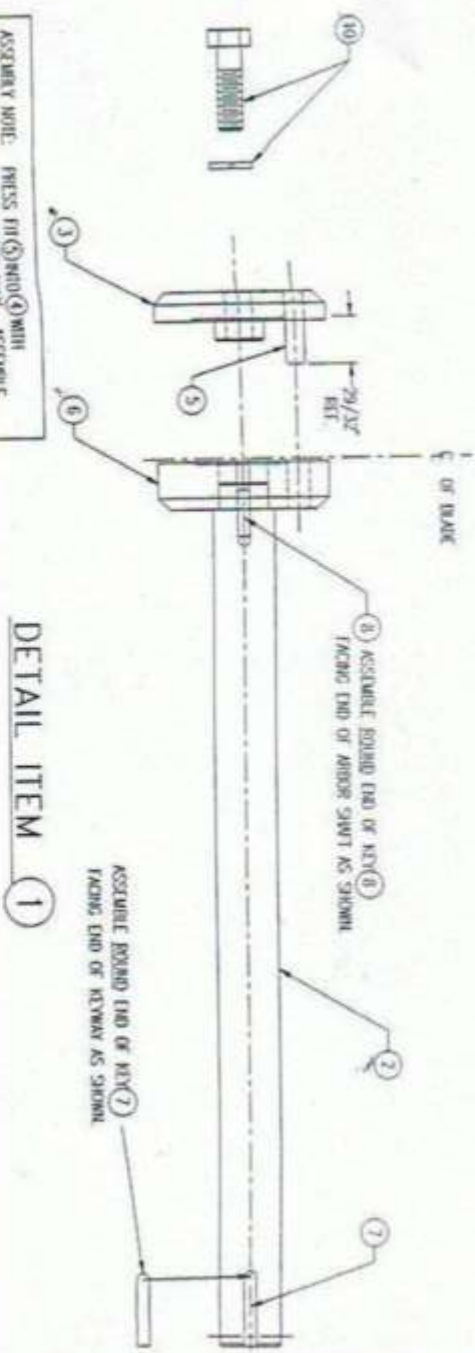
## GENERAL ARRANGEMENT

ITEM	QTY	PART#	DESCRIPTION
1	1	40014-01	Saw Frame
2	1	40003-03	Dash Decal
3	1	40009-01	Blade Guard & Water System
7	1	40021-01	Support Pipe
8	1	40021-06	Crank
9	1	MS0400	Ball(40021-10) Bolt order seperately (40021-11)
11	1	46041-01	Handle Bar Weldment
11A	2	CG0100	Handlebar Grips
12	1	40010-01	Belt Guard
14	1	40013-01	Arbor Shaft Assy. and Collars
17	1	40011-02	Undercarriage
18	1	46036-01	Thickness Adjustment Handle Lock
19	1	40012-01	Motor Mount
23	1	40009-16	Saw Blade Pointer Arm
24	1	40011-12	Rear Axle
25	1	CT0100	Throttle Cable Assy.
29	1	100040	Stop Switch Assembly
29A	1	EM0100	Stop Switch (Only)
30	1	NA	Ground Wire
31	1	NA	Engine Wire
32	2	NA	#8-32 X 1/2" Long Hex Socket Button Head Cap Screw w/F.W. & L.N.
33	2	40015-33	4" O.D. X 2" Wide Solid Rubber Tire Mounted on Black Wheel
34	1	BE0500	Thrust Bearing
35	2	46035-18	3/4" Acme Hex Nut
36	1	HW0001	3/8 NC Tap Bolt X 3" Long w/ Spring L.W. & Hex Nut
37	1	BS0200	Q.D. Bushing w/ 1-1/4" Dia. Bore(Arbor Shaft)
38	1	GR0100	Rubber Grommet
39	5	NA	Wire Tie
40	3	HW0001	3/4" SAE Flat Washer
42	2	40015-42	Set Collar, Rear Axle
43	2	46037-14	Set Collar, Front Axle
44	2	40015-44	6" X 1-1/2" Wide Solid Rubber Tire Mounted on Black Wheel



45	2	BE0350	Pillow Block Ball Bearing w/ Grease Fitting
48	4	40015-48	Replacement Bearing for Part# 40015-33 (4" Wheel)
50	2	40015-50	Replacement Bearing for Part #40015-44 (6" Wheel)
52	4	HW0001	3/8" N.C. X 1-1/4" Long HHCS w/ L.N.
53	4	HW0001	1/2" N.C. X 1-3/4" Long HHCS w/ (2) USS F.W. & L.N.
55	2	HW0001	5/8" SAE Flatwasher
57	1	HW0001	3/8" NC X 2" Long HHCS w/ L.N.
59	2	HW0001	3/8" NC x 1" Long w/ L.N.
60	2	40014-13	Bearing Support Plate
61	2/3	Call for spec.	Cog Belt Matched Set
64	1	DE0900 /	"STURDI-SAW" Decal
65	1	DE0900	"STURDI-SAW" Decal
66	1	DE2100	"NO OIL IN ENGINE" Decal (40003-05)
67	1	DE0300	"CAUTION/SAFETY" Decal, Blade Guard(40003-04)
68	1	DE1700	California "ENGINE EXHAUST WARNING" Decal (20006)

ASSEMBLY NOTE: CLEAN DIRT AND OIL FROM INSIDE BLADE COLLAR (6), KEY (8), AND 1-3/16" IG KEYWAY IN ARBOR (2). APPLY THREE (3) DROPS OF SAE-1-LOR "1-70" THREAD LOCKING SEALANT (OR EQUAL) TO BOTH KEYWAY AND ON STEPPED SHOULDER OF ARBOR SHAFT (2). FULLY SEAT KEY (8) IN BOTTOM OF KEYWAY IN ARBOR SHAFT. NOTE DIRECTION OF ROUND END OF KEY IN KEYWAY OF ARBOR SHAFT. ON STEPPED BLADE COLLARS, FIRST POSITION INSIDE BLADE COLLAR ON STEPPED SHOULDER OF ARBOR SHAFT WITH 1/4" TO ASSEMBLE TOWARD ARBOR SHAFT. ALIGN KEY (8) AND KEYWAY IN COLLAR. PRESS COLLAR ON AS FAR AS POSSIBLE CHAMFER FACING TOWARD ARBOR SHAFT. THEN ASSEMBLE STEPPED SHOULDER OF OUTSIDE BLADE COLLAR (3) INTO BORE OF INSIDE BLADE COLLAR. BY HAND, THEN ASSEMBLE STEPPED SHOULDER OF INSIDE BLADE COLLAR (3) INTO BORE OF ARBOR SHAFT. ALTHOUGH PIN (5) WITH HOLE IN INSIDE COLLAR, INSERT BOLT ASSEMBLY (10) INTO END OF ARBOR SHAFT AS SHOWN. TIGHTEN BOLT ASSEMBLY UNTIL INSIDE BLADE COLLAR (3) IS FULLY SEATED AGAINST STEPPED SHOULDER OF ARBOR SHAFT (2). CAUTION: DO NOT PUT ANY HEAD LOCKING SEALANT ON BOLT ASSEMBLY (10).



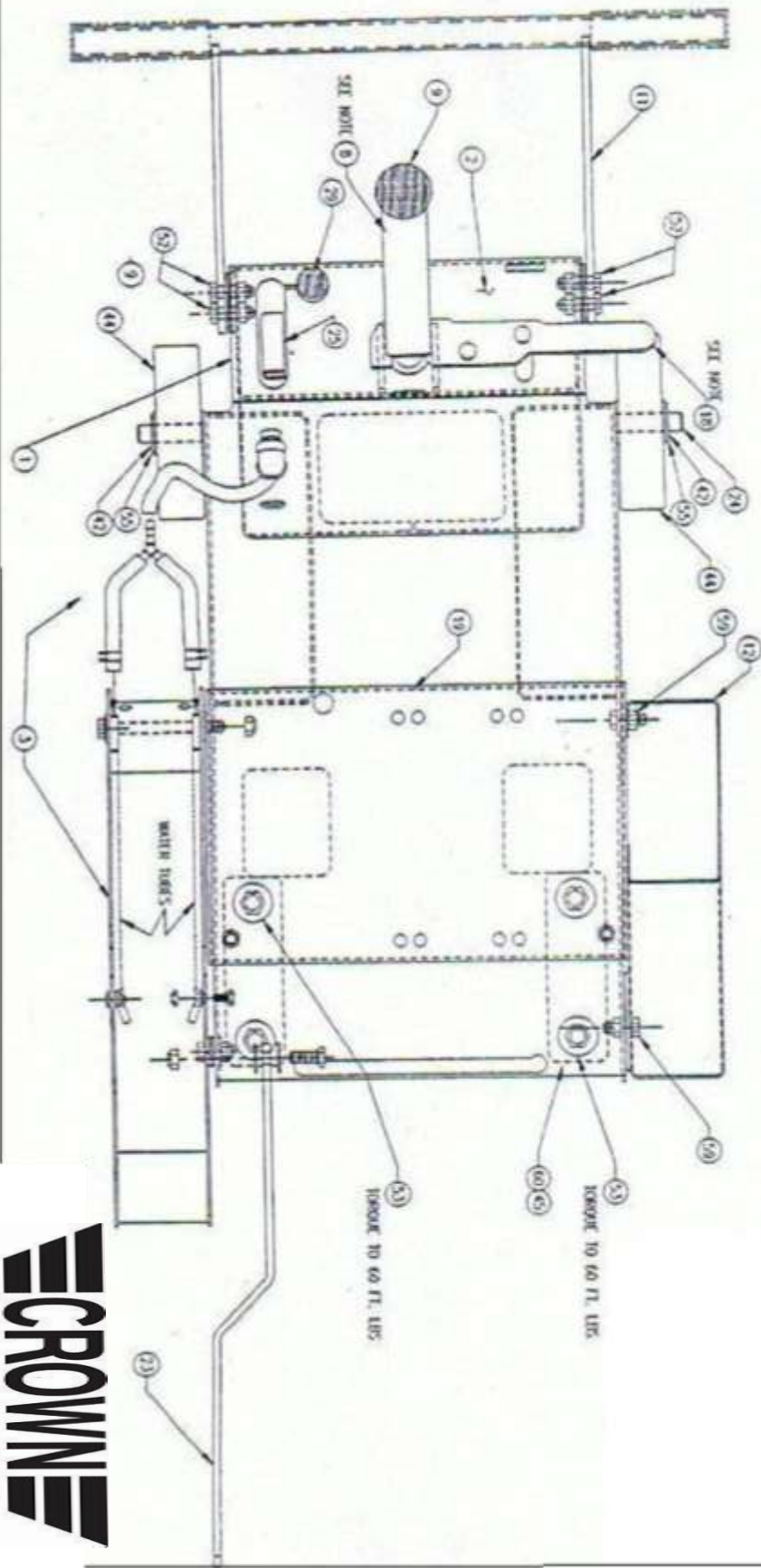
ASSEMBLY NOTE: PRESS FIT (5) INTO (4) WITH ARBOR PRESS ONLY. ASSEMBLE PIN (5) TO DIRECTION SHOWN. DO NOT STRIKE OR HAMMER. USE FTMA-100 HL-126 OR EQUAL AT ASSEMBLY.

DETAIL ITEM 1



ITEM	QTY	PART#	DESCRIPTION
1	1	40013-01	Arbor Assembly Consists of Items:2,3,5,6,7,8,9,10
2	1	40013-02	Arbor Shaft
3	1	40013-03	Outside Blade Collar Includes Pin
5	1	46033-07	Alloy Dowel Pin
6	1	40013-06	Inside Blade Collar
7	1	HW0001	Key w/ One (1) End Round X 1-1/2" Long (40013-07)
8	1	HW0001	Key w/ One (1) End Round X 1" Long (40013-08)
9	1	40013-09	Blade Wrench
10	1	HW0001	1/2" NC HHCS X 1-3/4" Long w/ Spring Lock Washer. SAE Grade 5 (40013-10)

NOTE:  
 SURGING LOCKING PINNACLE (18)  
 TIGHTEN LOCK NUT UNDER CARRIER FOOT  
 CORRECTLY TO CROWN-TRAIL FROM THE NUT  
 SHOULD BE TIGHT ENOUGH THAT THE NUTS  
 SHOULD FIT WITH MINIMUM PLAY. TIGHTEN  
 THE LOCKWASHER UNDER THE CARRIER FOOT  
 WITH SPANNER. THE NUT SHOULD BE TIGHT  
 ENOUGH THAT THE SPANNER CAUSES  
 RESISTANCE TO HOLD THE PINNACLE  
 IN THE LOCKED OR UNLOCKED POSITION  
 (REFER: SAW CUTTING OPERATIONS)



NOTE:  
 USE FLAT WASHER (ITEM 43)  
 UNDER ITEM 23 ON TOP OF BECAL.  
 ITEM 43 ALSO USED ON FRONT  
 WHEEL/AXLE ASSEMBLY, BOTH SIDES)

